

Installation INPA – EDIABAS FULL-English-Edition

1) **Delete ALL** versions of **INPA-ADS** from your computer or rename all **INPA-ADS** folders. For example: rename **INPA** into **“_INPA”**, **EDIABAS** into **“_EDIABAS”** and so on.

2) Open folder **Step_1** in the root of CD-disk given. Copy folder **EC-APPS** onto disk **C:**

3) Run file **Step_1\NFS\Entpackt\disk1\SETUP.EXE**

While installing choose **User Mode**

Further choose in opening windows:

1. **Parametrieren einer neuen Konfiguration ohne Daten**
2. **OBD**
3. **Kein API-TRACE**
4. **Kein IFH-TRACE**
5. **Komfort (.IPO)**

! RE-BOOT YOUR Computer !

4) Run file **Step_2\INSTALL\Instprog.exe**

1. Choose **ENGLISH**, press **Continue**, then press **Continue** again
2. While choosing the HDD disk for initial setup do not change letter **C:**.
Your

installation must be on drive **C:\ ONLY !**

3. Choose configuration **BMW Group Rectification programs UK**, press **Continue**.
4. Activate all spare boxes with: **EDIABAS 6.4.3 - UPDATE**, **INPA 5.0.1 - UPDATE**,
NCS Expert 3.0.8 - Complete
5. Press **Continue**.

5) Run file **Step_3\INSTALL\Instprog.exe**

1. Choose **ENGLISH**, press **Continue**, then press **Continue** again
2. While choosing the HDD disk for initial setup do not change letter **C:**.
Your

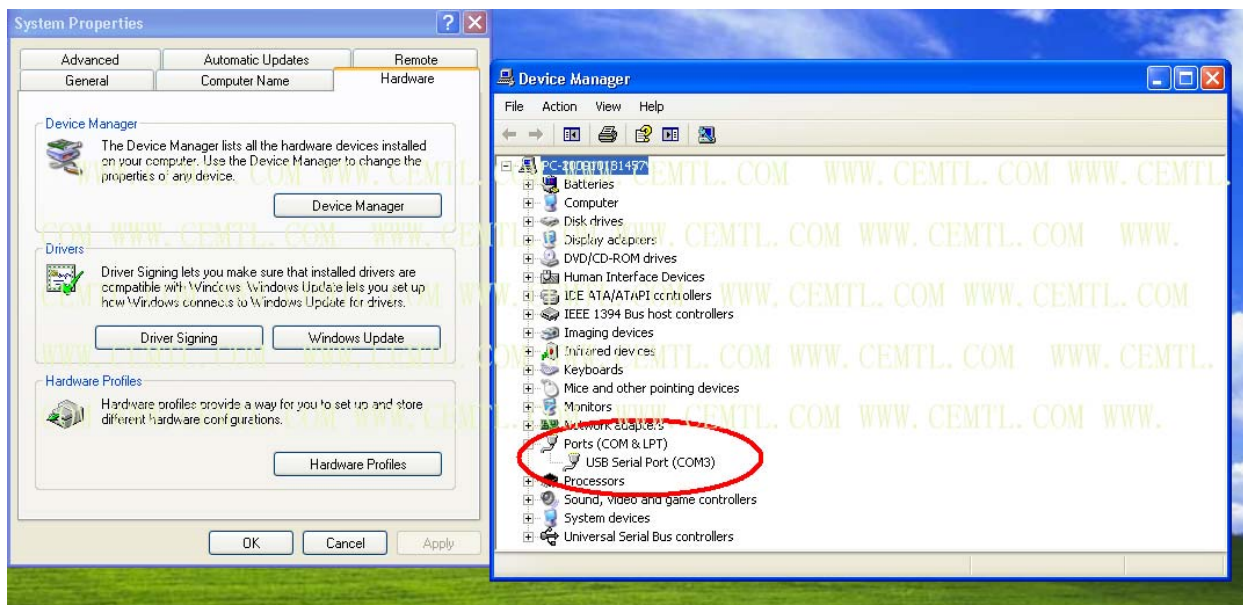
installation must be on drive **C:\ ONLY !**

3. Choose configuration **BMW Group Rectification programs UK**, press **Continue**.
4. Activate all spare boxes with: **INPA 5.0.1 - UPDATE**, **NCS Expert 3.0.8 - UPDATE**
5. Press **Continue**.

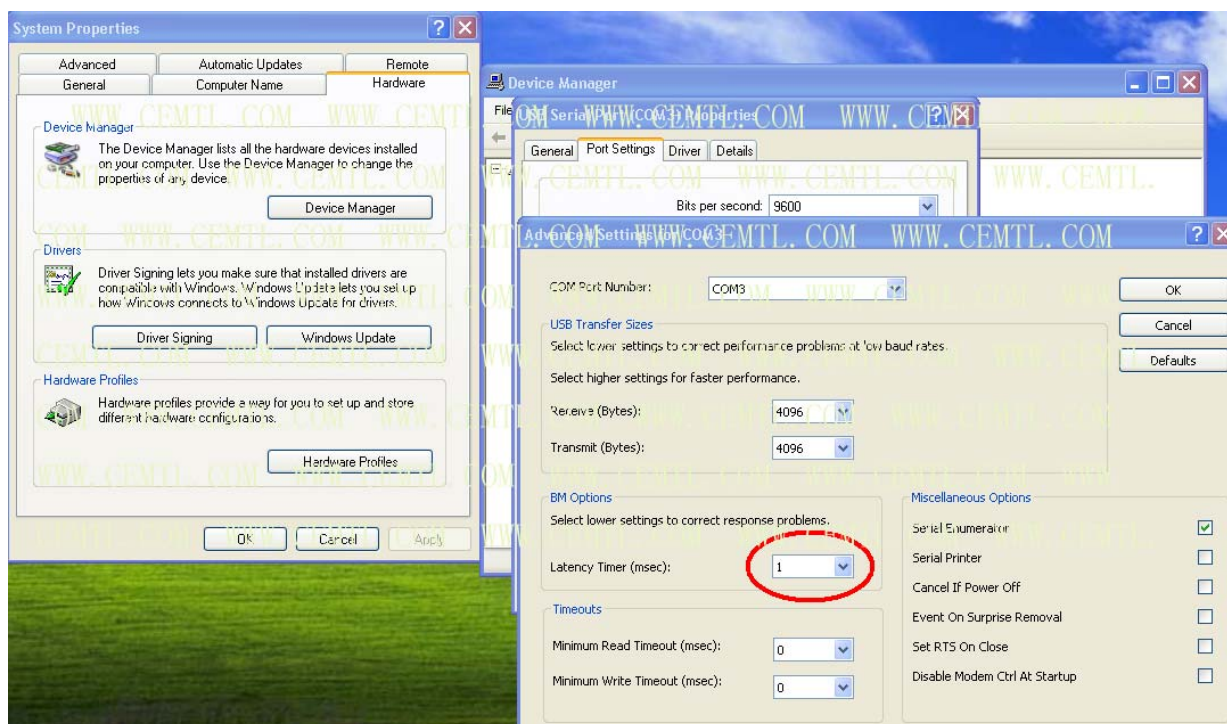
6) Find the file **C:\EC-APPS\INPA\CFGDAT** named **inpa.ini** and replace it with the file **inpa.ini** that is in the root directory of CD-disk given.

7) Plug the Adapter into spare USB-port and install drivers manually from the folder **Driver_D_CAN_USB** using **Driver Wizard** of your **Windows XP-Service Pack-2**

8) Use following pictures for help.



9) In **Advanced** field change number of COM-port to the value from **2** to **4**. Also change the value of **Latency Timer** from **16** to **1**. **Remember the number of the COM-port chosen !**



10) In the file **EDIABAS.INI** "**Interface = STD:OBD**" must be chosen
(That is default parameter after installing from CD-disk given. Check the parameter if you use another version of INPA !)

11) In the file **C:\Windows\OBD.INI** put the number of USB-COM-port to the value that you remembered in the step_3

12) Run from CD-disk a file **Driver_D_CAN_USB\OBDSetup.exe**

14) **RE-BOOT your Computer !**

15) Use the following order of using adaptor:

- Plug the Adaptor into spare USB-port
- Plug the Adaptor into OBD-II connector of BMW
- Turn the Ignition into ON position
- Run the soft INPA with file **C:\EC-APPS\INPA\BIN\inpaload.exe**
- Choose the model of BMW and type of modul you want to see
- Close the soft and disconnect the Adaptor from USB-port each time you change the car connected

N.B.:

Your Adaptor is already configured to work with BMW both K-line and CAN-bus.

Modes of configurator file **D-CAN.exe**, that is on the CD-disk given in the folder

_D_CAN_USB as follows:

-----Configuration-----

For configuration interface:

Connect USB cable

Run D-CAN.EXE and setup CAN BUS mode.

LED should OFF

Don't use USB Extender cable, directly connect interface to computer.